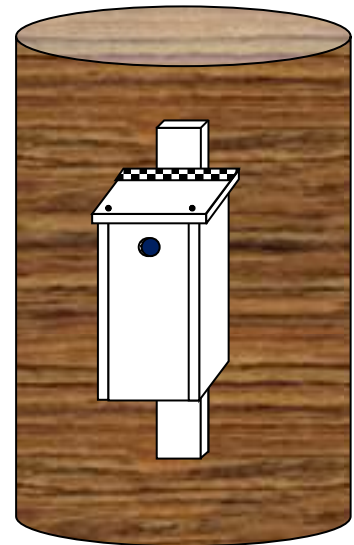
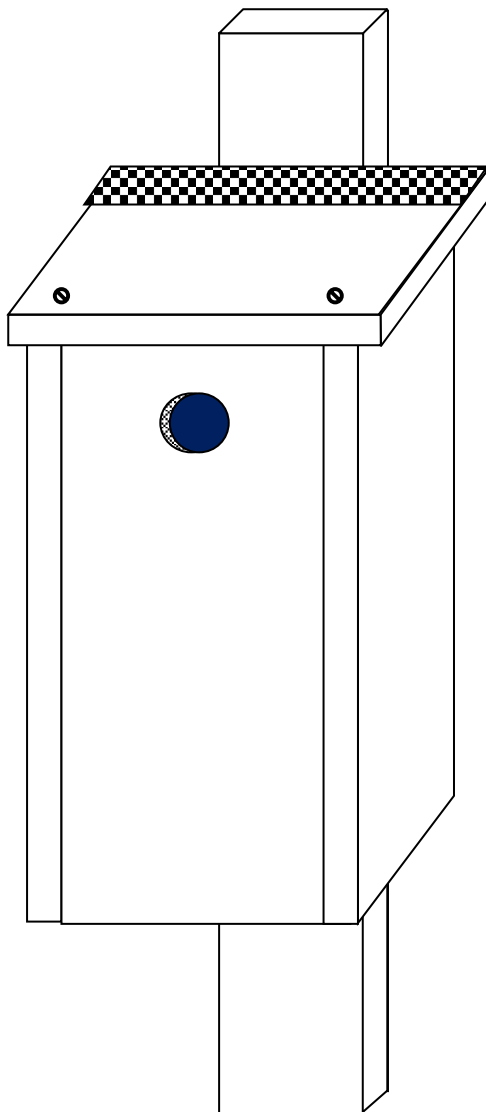


# The Northumberland Marsh Tit (or Coal Tit) Box

(after Broughton & Hinsley (2014) Ringing & Migration)

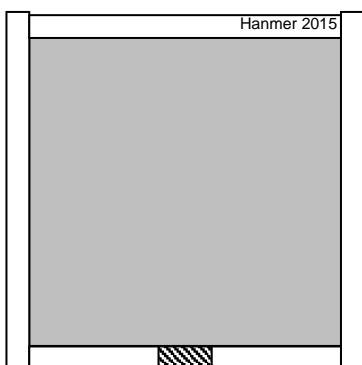


Screw on to a 40cm batten and attach to the tree. (1 to 1.5 metres high only)

Erect boxes two together (on adjacent trees).

The top (13cm by 15cm) should overhang at the front and sides.  
Roof hinge made from tape or roofing flashing.  
Screw lid down at front corners. Make sure you can remove the screws.

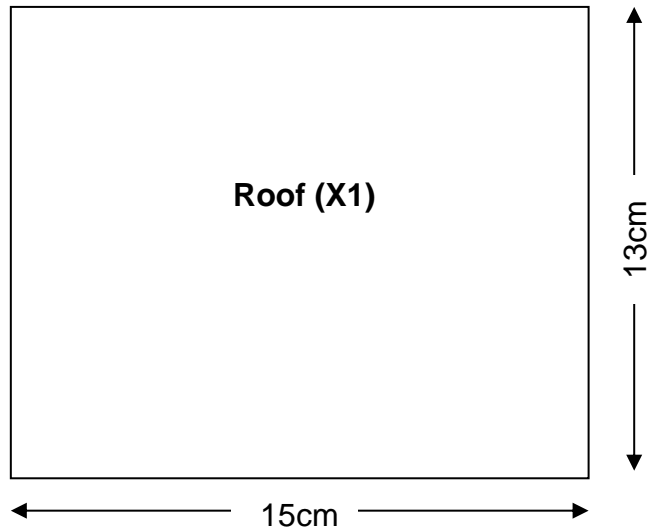
Paint first with water based fence paint; then the roof can be painted with outside gloss paint.



Plan view inside box.

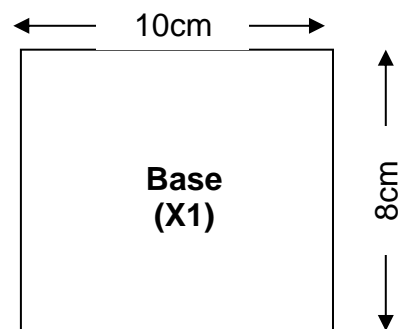
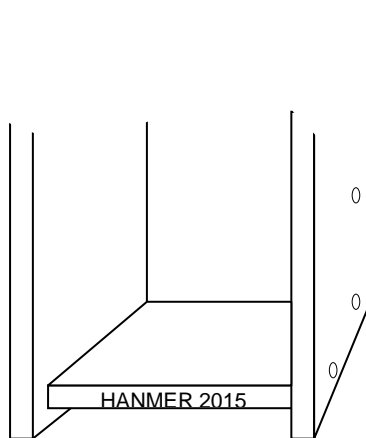
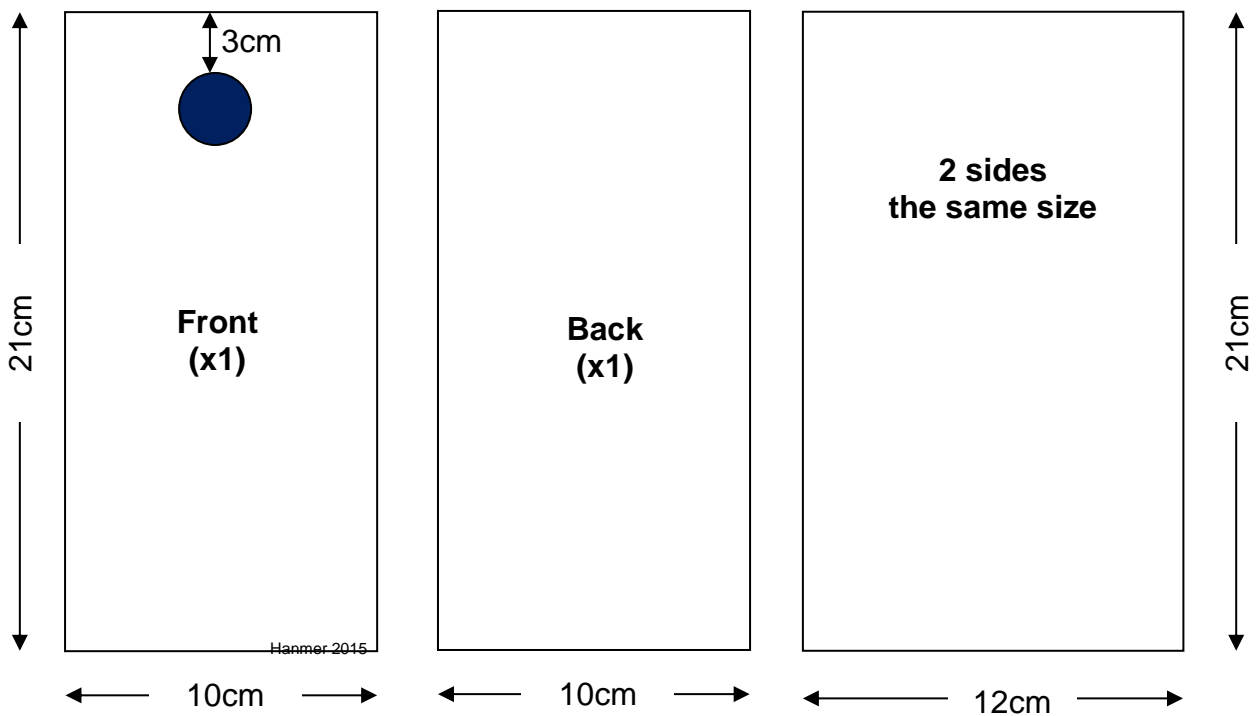
Use plank wood (treated or untreated) approximately 2cm thickness.

Front, base and back 10cm wide planks.  
Sides 12cm wide planks  
Top 15cm plank



**Hole size**

26mm diameter hole for Marsh Tits (no larger).



Insert base 0.5cm up from the bottom of the box.  
Trim base by a few millimetres to fit it in to the bottom of the box.