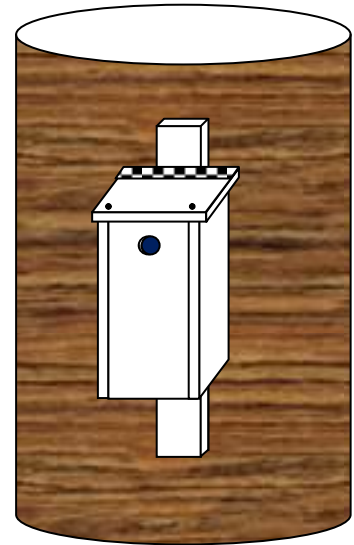
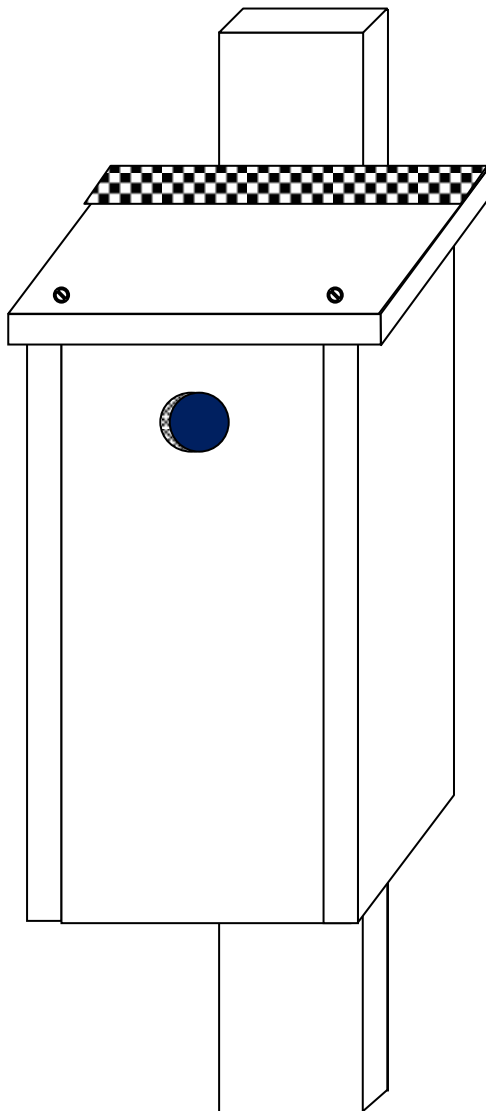


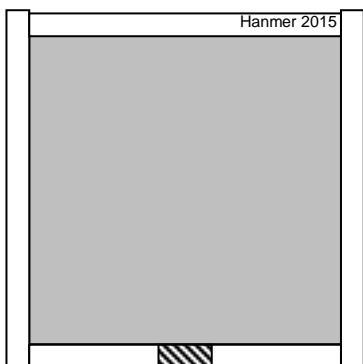
The Northumberland Top Opening Bird Box- For Sparrows, Tits & Redstarts



Screw on to a 40cm batten and attach to the tree. 1 to 2 metres is high enough for the birds; only place higher if human interference is likely.

The top (16cm by 16cm) should overhang at the front and sides
Roof hinge made from tape or roofing flashing.
Screw lid down at front corners. Make sure you can remove the screws.

Paint first with water based fence paint; then the roof can be painted with outside gloss paint.



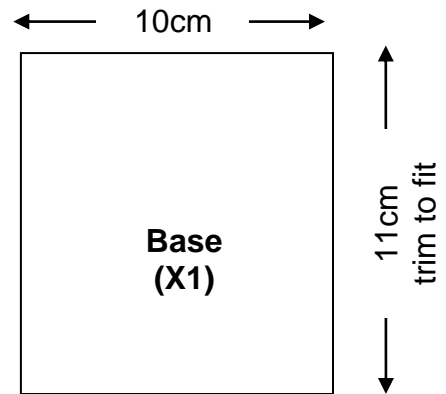
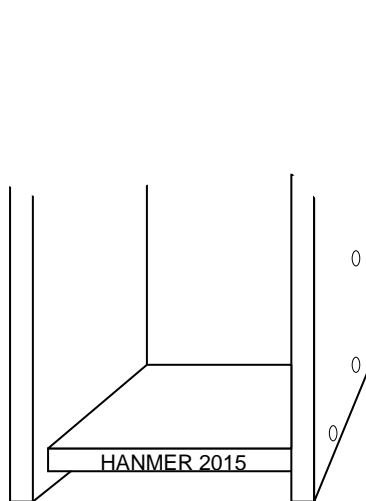
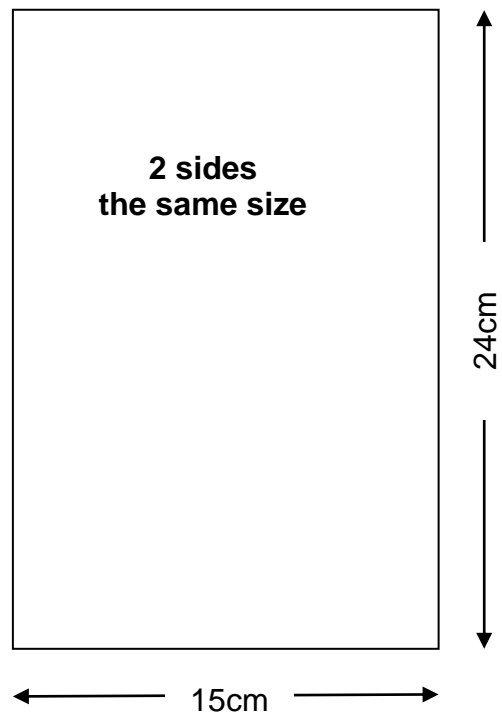
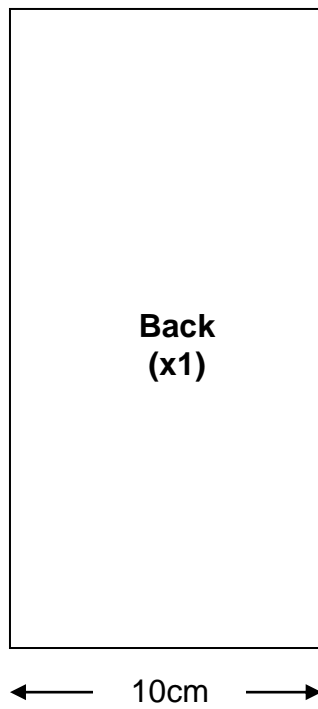
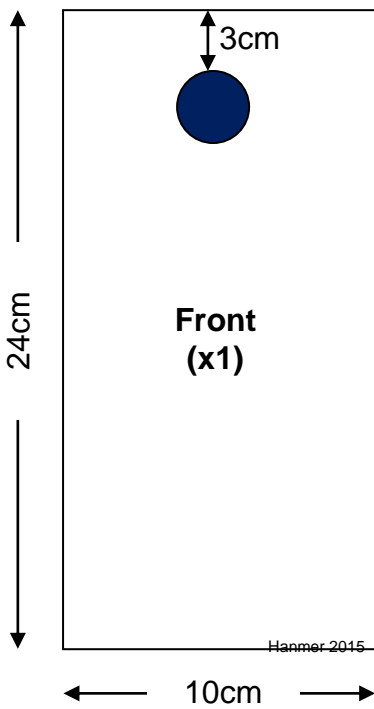
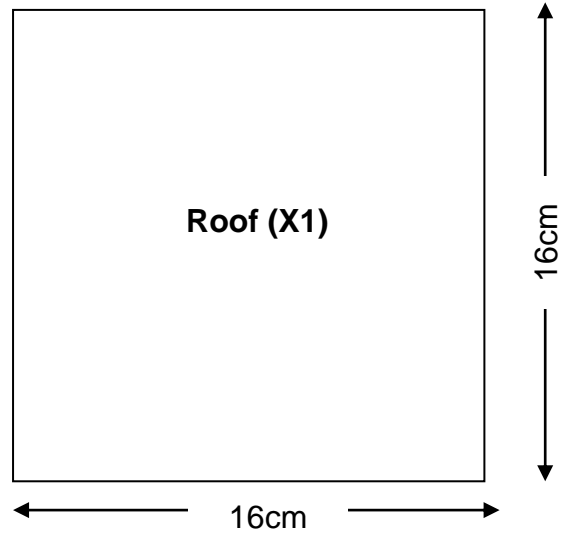
Plan view inside box.

Use (plank) wood for sides, front, back and base (treated or untreated) approximately 2cm thickness.

Front, base and back 10cm wide planks.
Sides 15cm wide planks
Top 16cm.

Hole size

40mm diameter hole for Redstarts
28mm for Tree Sparrows & Great Tits
25mm for small Tits



Insert base slightly up from the bottom of the box.
Trim base by a few millimetres to fit it in to the bottom of the box.